



# Pikes Peak Chapter

The Construction Specifications Institute



## Pikes Peak Chapter CSI November Chapter Meeting EPS Envelope Overview

Join us for this month's presentation by Kris Essex and Jason Wood from Insulfoam. The presentation is EPS Envelope Overview. Learn what EPS is and how it is manufactured. Be able to discern and differentiate between ASTM C 578 and D 6817. Understand the features and benefits of the different EPS products, including standard, faced and composite. Lastly, learn how to design EPS into below grade, wall and roof systems.

Insulfoam is a Carlisle Construction Materials Company (NYSE: CSL), and is the nation's largest manufacturer of block-molded expanded polystyrene (EPS). For over 50 years, Insulfoam has been enabling building professionals to construct high-quality building insulation systems at a minimal cost. With the widest range of faced, laminated and standard high-performance EPS insulation products, Insulfoam has the right products for any insulation application while still providing the highest R-Value per dollar over any other rigid insulation.

*Don't forget Toys for Tots!*

*As we do every year before the holidays, we encourage you to bring a toy for the Toys for Tots program.*

*The USMC Reserves program helps children that are less fortunate, so they can experience the wonder of the holidays.*

*This is your chance to brighten the holiday season for thousands of local children, that otherwise might not get anything, so please be generous!*

*The need is especially critical this year.*



Date: Wednesday, November 28, 2018  
Time: 11:30 a.m. to 1:00 p.m.

### The Warehouse

25 W. Cimmaron Street  
Colorado Springs, CO 80903

No cost to Pikes Peak Chapter members  
Please RSVP at [www.pikespeakcsi.org](http://www.pikespeakcsi.org)  
by noon on  
Monday, Nov. 26

Kris Essex has been in the building and construction business for over 35 years. He got his start in a family business building custom homes. He then went on to handle sales for Colorado and Utah for (APOC) a major roof coatings manufacturer, and later went on to build a territory for Henry roof coatings in the Colorado market. Kris now works for Insulfoam as an outside sales representative and has been with the company for over 18 years. His territory is Colorado, Wyoming, and parts of Montana.

## MESSAGE FROM THE PPCSI BOARD

Thank you to Gerry Cooper from Cooperform for a great presentation last month on Commercial Fire Rated Aluminum Glazing Systems.

As you may know, Pikes Peak Chapter CSI sponsors an annual scholarship for students in the A/E/C program at PPCC. The funds for this sponsorship comes from our tabletop presenters throughout the year. We are in need of tabletop sponsors currently. If you are a product representative that is interested in the opportunity to speak to our members and guests, please contact any board member to get details on becoming a tabletop presenter.

Don't forget that this is the month for our Toys for Tots drive. Please bring an unwrapped gift for a child— or two if you can to our Chapter Meeting on November 28. These gifts go to children that may not get gifts if not for this wonderful program. We all enjoy seeing our children and grandchildren opening their gifts in delight during the holidays, so please think of these children and give generously so they too can be excited and enjoy this holiday season.

This month we welcome Jason Wood and Kris Essex from Insulfoam. Kris will be presenting an overview on EPS Envelope.

Our tabletop presenter this month is Luke Bleichrodt from RW Specialties. Luke will be showing us some wonderful reclaimed wood products from Forever Barnwood.

Thank you all for your continued membership and attendance at our meetings. Please be sure to contact any board member if we can be of service.

## Pikes Peak Chapter

### President:

Emanuel Mungaray, CSI  
GCC of America  
720-579-6288

### President-Elect:

### Vice-President:

Cody Coppola  
727-688-0564

### Secretary:

Shawn Gring  
Merritt General Contractor  
719-243-6371

### Treasurer:

Larry W. Gilland, CSI, CDT, LEED AP  
LGA Studios  
719.635.0880

### Past President:

Rob Hixon, CSI  
Stresscon  
719-390-5041

### Directors:

Charlie Lengal III,  
QCP, CxA, CPD, CCA  
M-E Engineers, Inc.  
719.536.0036

Bob Stanton, CSI, CDT  
Stanton Construction Co.  
719.471.7891

Ben Pollock, CSI  
Webb Design  
719.344.8350

Greg Gulliksen, CSI, CDT, AIA  
CSNA Architects  
719.473.7225

Bruce W. Barr, CSI, AIA, LEED AP  
Art C. Klein Construction, Inc.  
719.570.6060



**Manny Mungaray**  
Market Manager



cell (720) 579 6288  
fax (303) 739 5940  
emungaray@gcc.com

GCC of America, Inc.  
600 S. Cherry Street, Suite 1000  
Glendale, CO 80246

Building together® [www.gcc.com](http://www.gcc.com)



**SPECIFICATIONS CONSULTANTS**

**PAUL DeARMENT, P.E., CCS, CSI, SCIP**  
PRINCIPAL

p.o. box 3010 (719) 577-9414 ofc  
colorado springs, colorado 80934 (719) 623-0172 fax  
pdeament@specscons.com (719) 651-7734 cell

Shane David CSI, CDT, EDAC  
**HEALTH SPECIALIST**

sdavid@treanorhl.com  
o 719.578.9317  
d 303.298.4808  
c 806.231.1778

treanorhl.com




**STRESSCON**  
Architectural and Structural Precast Concrete  
An **ExCo** Company

**Robert D. Hixon**  
Pre-Construction Services

3210 ASTROZON BOULEVARD  
COLORADO SPRINGS, CO 80910

PHONE: **719-390-5041**  
DENVER LINE: 303-623-1323  
FAX: 719-390-5564  
CELL: 719-205-4700  
E-MAIL: rhixon@stresscon.com



**PROFESSIONAL RESTORATION & REPAIR**

STRUCTURAL & COSMETIC REPAIRS  
ON  
CONCRETE, MASONRY & WOOD

CRAIG L. NELSON, CDT, CSI

P.O. Box 38932 Colorado Springs, CO 80937  
(719) 632-3996 • FAX: (719) 632-3997

WEB: [pro-restoration-repair.com](http://pro-restoration-repair.com)



**ART C. KLEIN CONSTRUCTION, INC.**

design • construction  
custom residential • commercial  
**(719) 570-6060**

**Bruce W. Barr, AIA**  
Architect, LEED® AP  
Mobile: (719) 499-1989

3370 Chelton Loop So. • Colorado Springs, CO • 80909 • Fax (719) 570-9671  
[www.ackconstruction.com](http://www.ackconstruction.com) E-Mail: [bbarr@ackconstruction.com](mailto:bbarr@ackconstruction.com)

**Architectural LINKS**  
Construction Specifications

**Gregg Voos**  
Registered Architect, CSI

719.231.4235 office  
719.594.4711 fax  
PO Box 7267 Colorado Springs, CO 80933-7267  
[gtvs@msn.com](mailto:gtvs@msn.com)

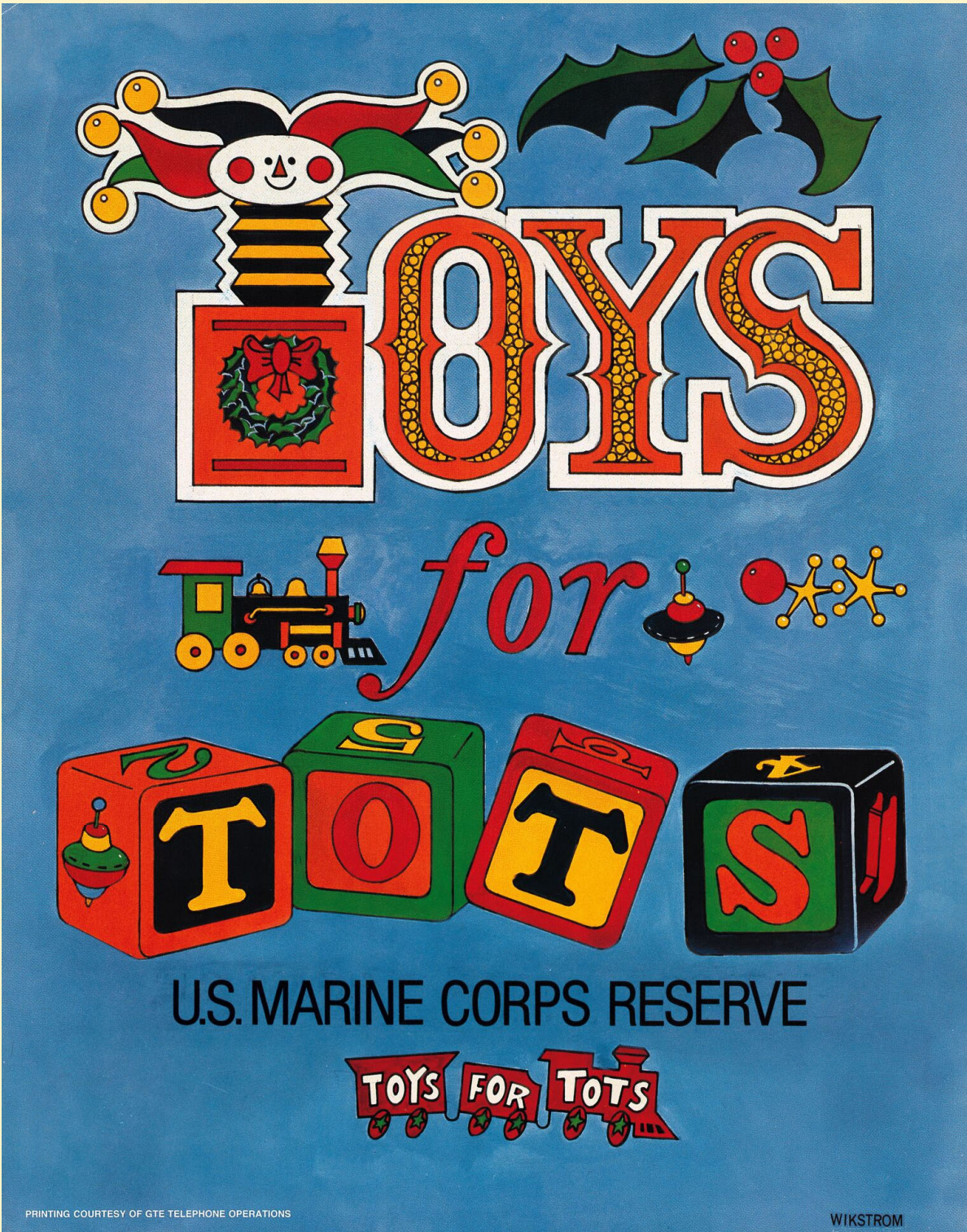
**HCDA**

HCDA ENGINEERING, INC.  
STRUCTURAL CONSULTANTS

**Andrew B. Baturevich, P.E.**

545 E. PIKES PEAK AVE., SUITE 100 (719) 633-7784  
COLORADO SPRINGS, CO 80903 FAX (719) 471-3173  
[abaturevich@hcdaengineering.com](mailto:abaturevich@hcdaengineering.com)

Don't forget—November is our annual Toys for Tot's drive! This program has been in existence since 1947 and we are proud to continue the tradition of gathering gifts for children that will otherwise not have gifts during the holidays. Please bring a new, unwrapped gift when you come to the November Chapter meeting.



# NEW RECLAIMS OLD

## FOREVER BARNWOOD PRODUCT CATALOG



[www.foreverbarnwood.com](http://www.foreverbarnwood.com)  
[www.diybarnwood.com](http://www.diybarnwood.com)

Dimensional Lumber  
Timber Beams & Posts  
Timber Mantels  
Ship Lap  
Handy Pack  
Rustic Barn Doors  
Stair Parts  
Commercial  
Cabinets  
Barnwood Plank Flooring

*Brought to you by:*

**FOREVER**  
**BARNWOOD**  
  
[www.foreverbarnwood.com](http://www.foreverbarnwood.com)